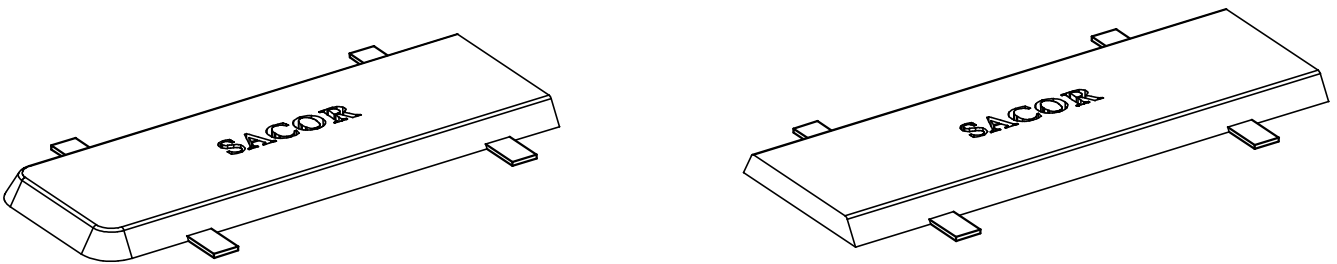
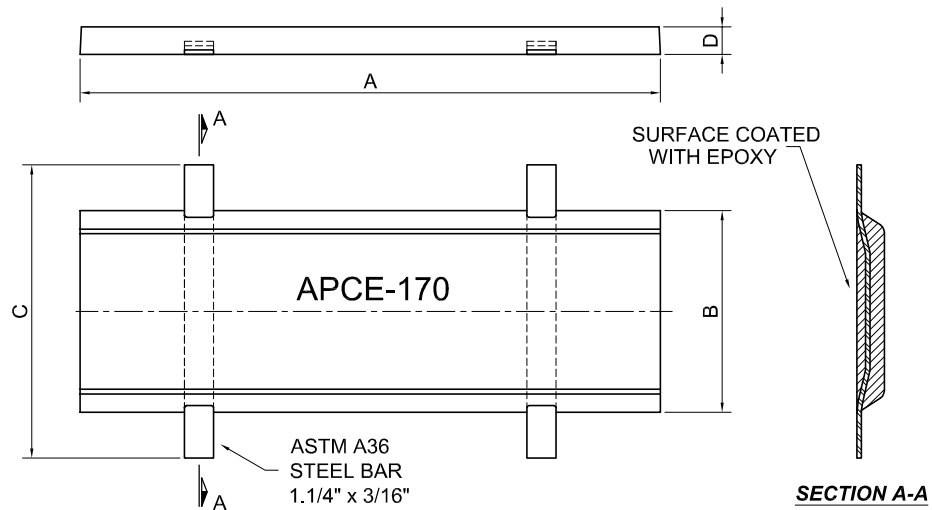
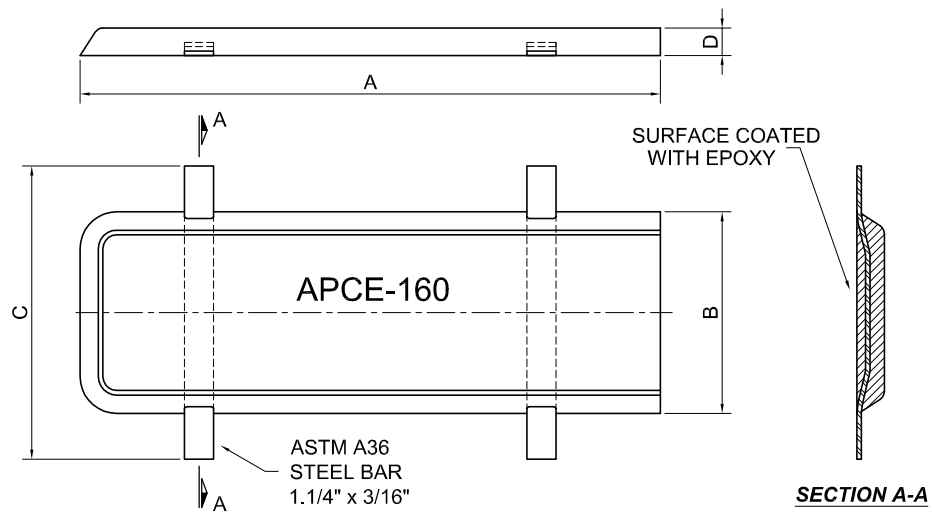
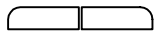
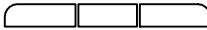



ZINC ANODE TYPE APCE



| TYPE       |               | DIMENSION (mm) |     |     |    | WEIGHT (kg) |       | SEE NOTES   |
|------------|---------------|----------------|-----|-----|----|-------------|-------|---|
| SACOR APCE | PETROBRAS ZES | A              | B   | C   | D  | NET         | GROSS |   |
| 320        | -             | 1240           | 120 | 170 | 40 | 31,5        | 32,0  |  |
| 490        | -             | 1865           | 120 | 170 | 40 | 48,5        | 49,0  |  |
| 660        | -             | 2490           | 120 | 170 | 40 | 65,5        | 66,0  |  |

- 1.- ALL DIMENSIONS ARE IN MILLIMETERS, EXCEPT WHERE INDICATED .
- 2.- APCE-320 IS COMPOSED WITH 2 APCE-160.
- 3.- APCE-490 IS COMPOSED WITH 2 APCE-160 AND 1 APCE-170.
- 4.- APCE-660 IS COMPOSED WITH 2 APCE-160 AND 2 APCE-170.