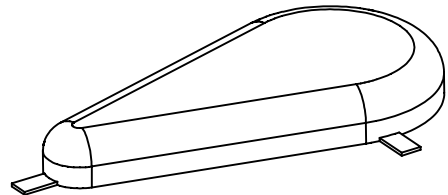
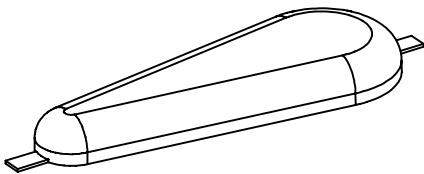
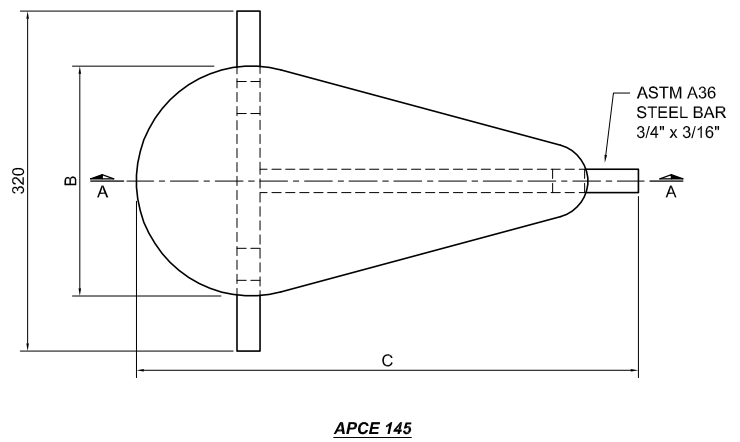
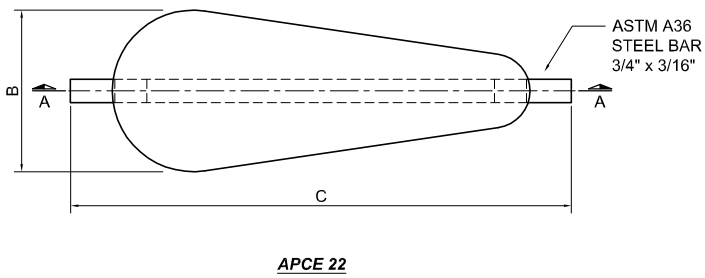
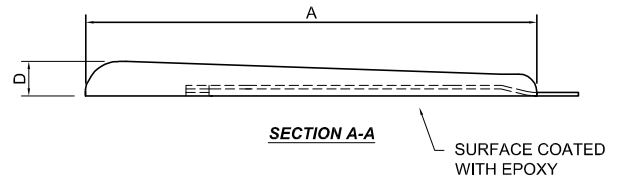
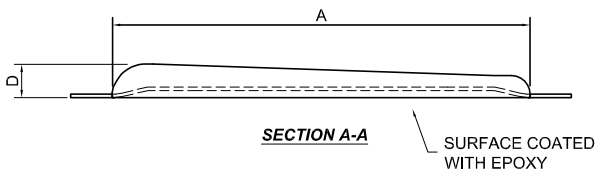


ALUMINIUM ANODE TYPE APCE



TIPO		DIMENSÕES (mm)				MASSA (kg)	
SACOR APCE	PETROBRAS AES	A	B	C	D	LÍQUIDA	BRUTA
22	0,9	230	75	300	23	0,7	0,9
145	5,8	400	220	450	60	5,0	5,8